



CULUS

5

New New York
Hotels



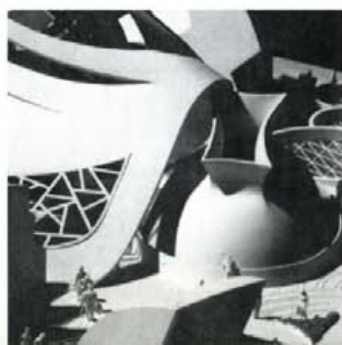
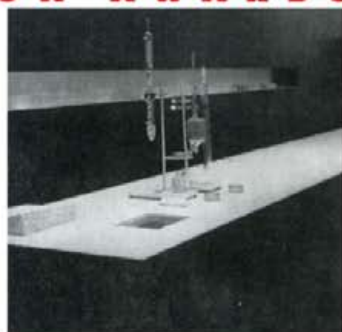
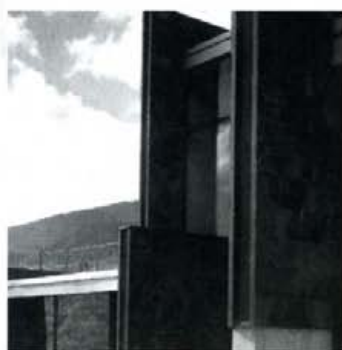
7

James Stewart Polshek
on "The Ethical Architect"



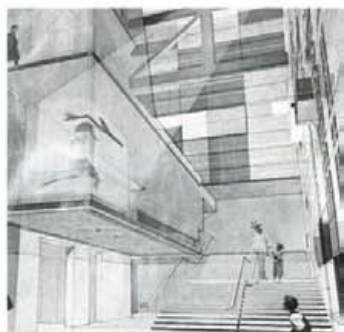
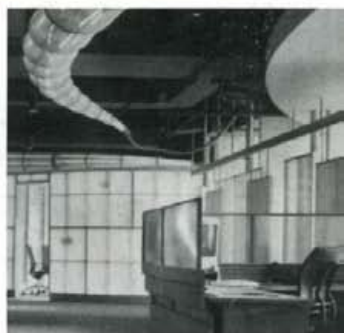
7

David Childs on
"Fabricating Architecture"



9

Apartment Living in
"The Center of the Universe"



2001 DESIGN AWARDS

ARCHITECTURE AWARD

**Michael Haverland Architects
and TAMS Consultants**

**Addition to the Timothy Dwight
Elementary School**

New Haven, Connecticut

Planned in collaboration with community participants, this 9,300-square-foot addition references the existing 1963 Eliot Noyes-designed school and critiques it by adding windows and a variety of contextual materials. The plan creates three distinct outdoor spaces: a space for neighborhood festivals, a formal entrance garden, and an enclosed "kindergarden." Security, maintenance, and economic issues contributed to the clean, simple form. An elliptical lobby provides a civic space like those in great local public buildings. Iconography identifies the building as an important institution in the Dwight neighborhood and an integral part of the School.

FH: This is one of the most overlooked building types in America right now; to do a public school in a thorough manner is a rare thing indeed. **RL:** It uses the basic materials of public schools, yet the arrangement is tremendously vigorous, and creates spaces unlike those of most public schools. **AC:** It looks like split-faced brick-sized concrete block with glazed bricks in between. But it's just beautiful. It takes it out of the realm of the mundane.

Client: New Haven Board of Education; **Design Architect:** Michael Haverland with Yale Urban Design Workshop students Paul Arougheti, Ben deRubertis, Al Dasher, Dominique Davison, Marcos Diaz-Gonzalez, Joe Fong, Billy Forrest, Mark Gage, Michael Lee Poy, Tom Morbitzer, Joe Pikiewicz, Paul Whittaker, Belinda Young, Kristina Lamour, Jen Lau, Thomas Dunn, Paul Whittaker, and Jim Woodworth; **Architect of Record:** TAMS Consultants, Boston; **Landscape Architects:** Balmori Associates; **Engineer:** Salamone Associates; **Contractor:** A Prete Construction.

