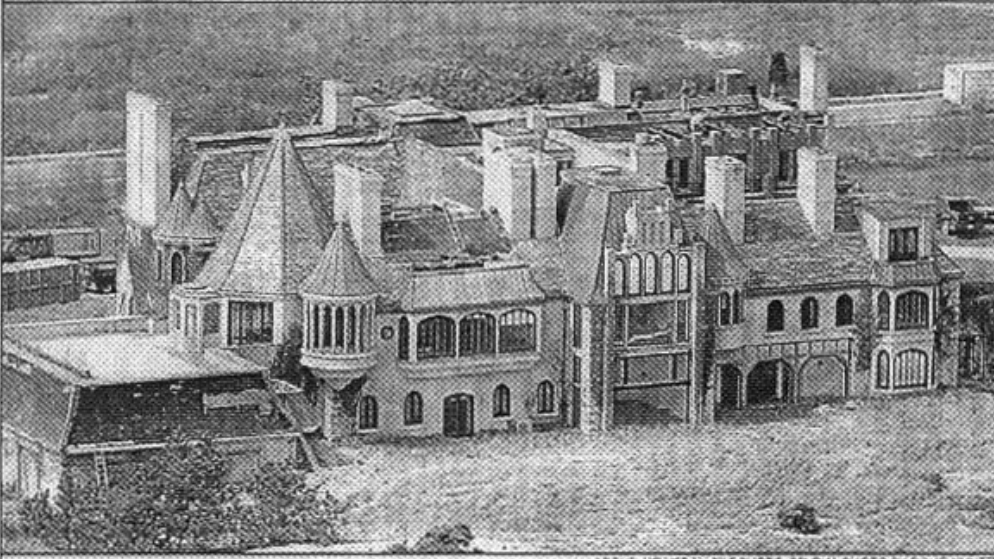


His home was (once) his castle



At left is Dragon's Head, the oceanfront mansion of Calvin Klein, which was built in 1924 by Henry Francis du Pont and later extensively remodeled. The East End castle is in the process of being torn down, below, as Klein plans a smaller abode. Dragon's Head was once the East End's biggest house — at least until 1999, when Ira Rennert began building Fair Field, an approximately 100,000-square-foot complex in Sagaponack.

ABOVE, NEWSDAY FILE PHOTO; BELOW, PHOTO BY DOUG SILINTZ

